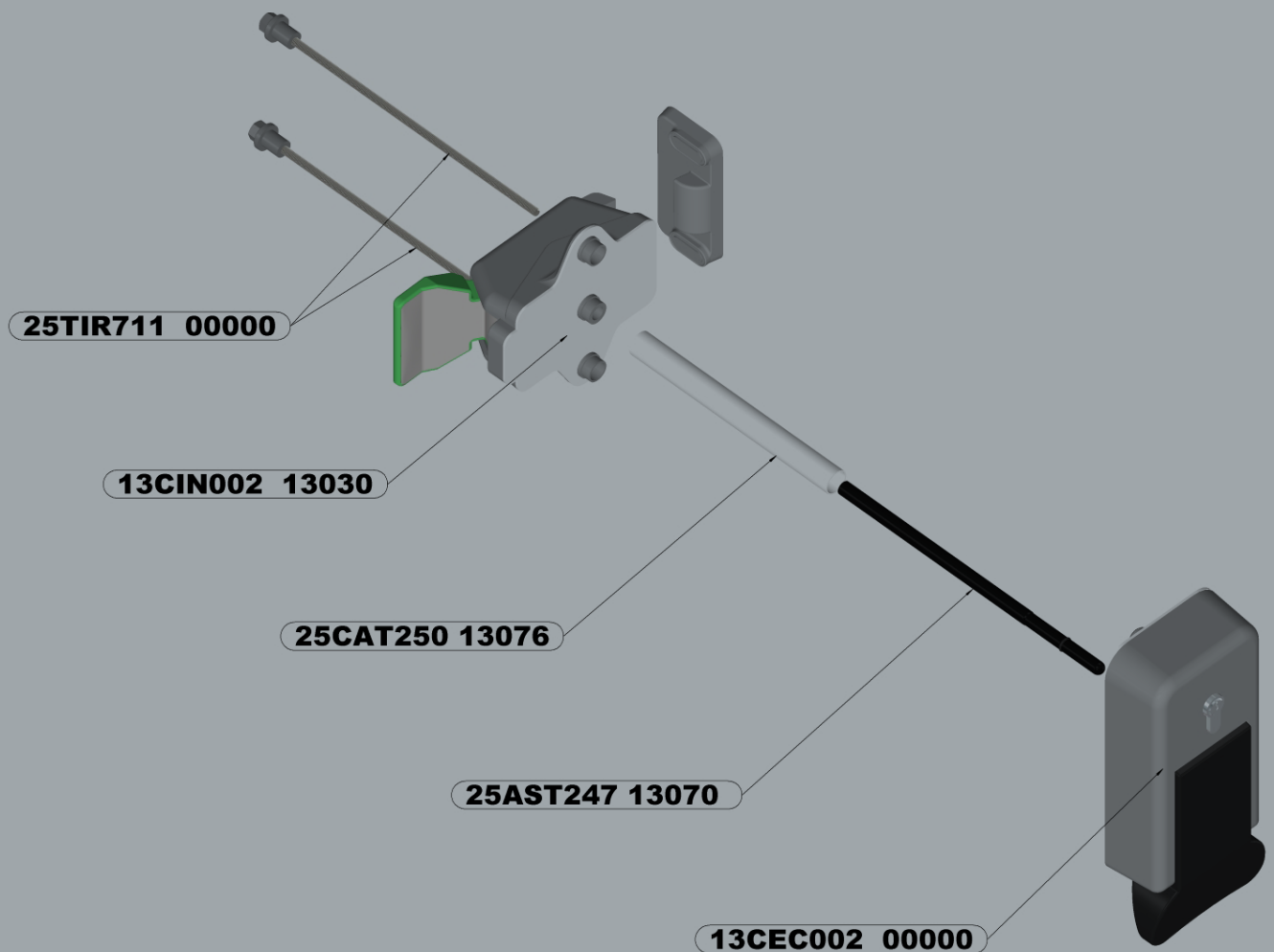




MTH PRODUCT CATALOGUE



FDTs
www.fdts.co.za • UNIT 4 LANRIC PARK • 24 PASTORALE AV • CAPE TOWN • 7550

Data subject to change without notice

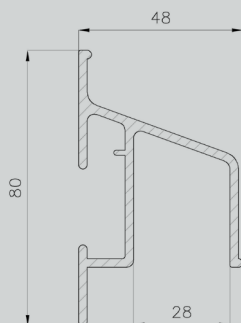
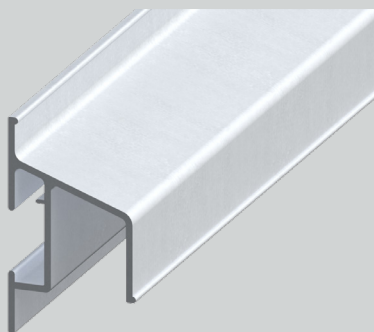
Table of Contents

Table of Contents	2
1. Aluminium Profiles	3
2. Gaskets	4
3. Handles and Locks	6
4. Hinges	10
5. Heating Cable	13
6. Compensating Valves	13
7. Sliding System Components	14

1. Aluminium Profiles

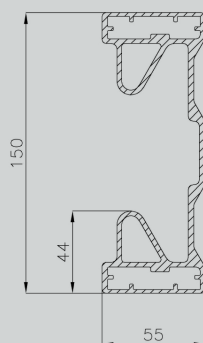
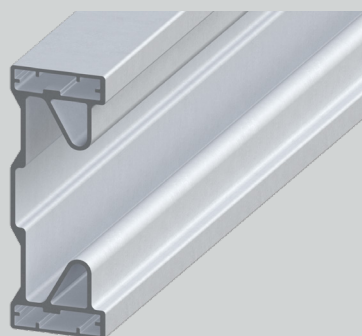
10GUA001 10044

ANOD. ALUMINIUM WALL SIDE GUIDE PROFILE



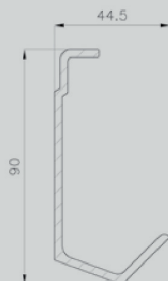
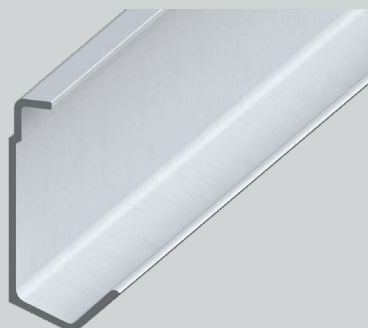
10PMA001 00000

ANOD. ALUMINIUM TRACK PROFILE "MIRROR"



10PDA001 10045

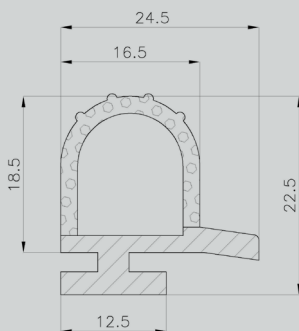
ANOD. ALUMINIUM TRACK PROFILE MODEL 240



2. Gaskets

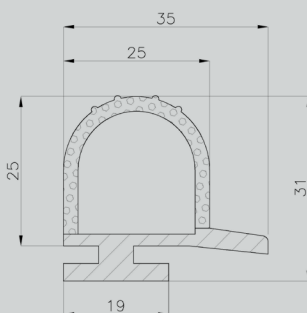
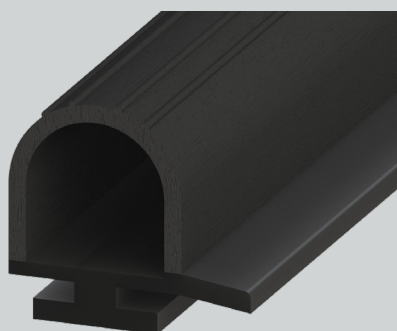
11PLP001 11014

PERIMETRAL GASKET H=18,5 FOR DOOR THK=68



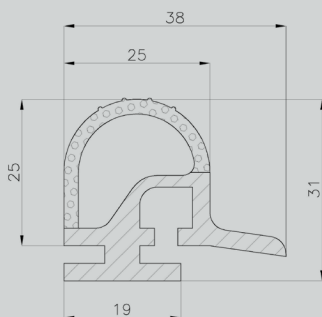
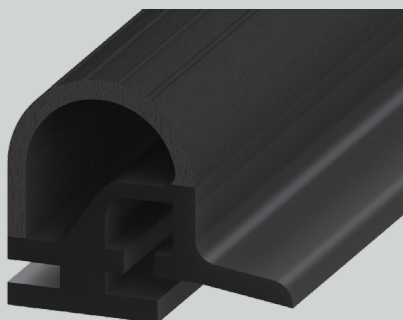
11PLG001 11015

PERIMETRAL GASKET H=25 FOR DOOR THK=92-151



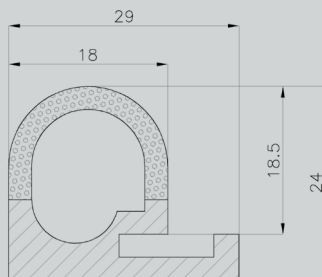
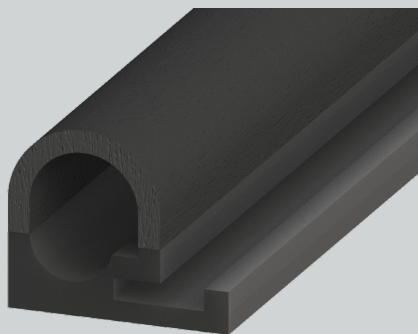
11PLR001 11016

PERIMETRAL GASKET H=25 WITH HEATING CABLE PASSAGE



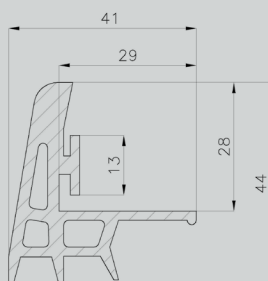
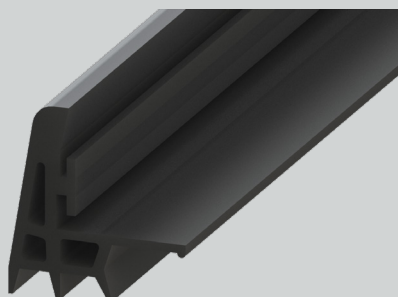
11PLE001 11019

PERIMETRAL GASKET H=25 WITH MECHANICAL FIXING



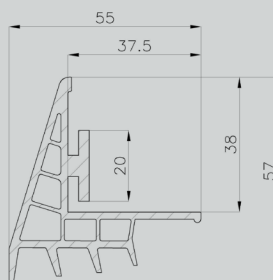
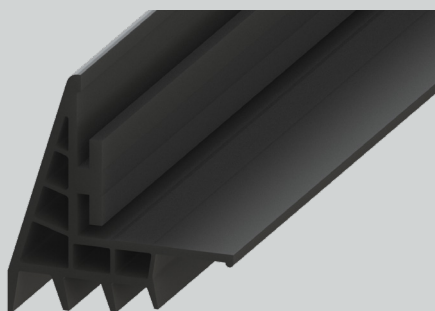
11INF030 11021

LOWER GASKET FOR DOORS THK=68 L=4500



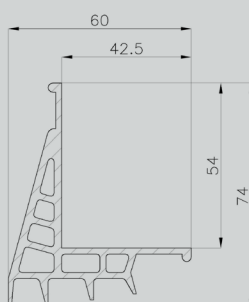
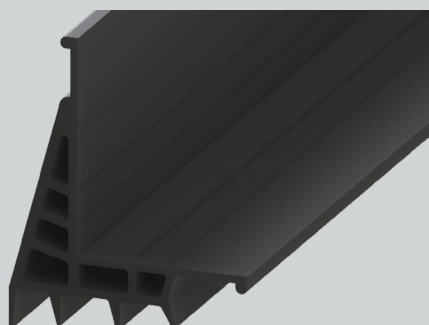
11INF020 11022

LOWER GASKET FOR DOORS THK=92-151 L=4500



11INF070 11025

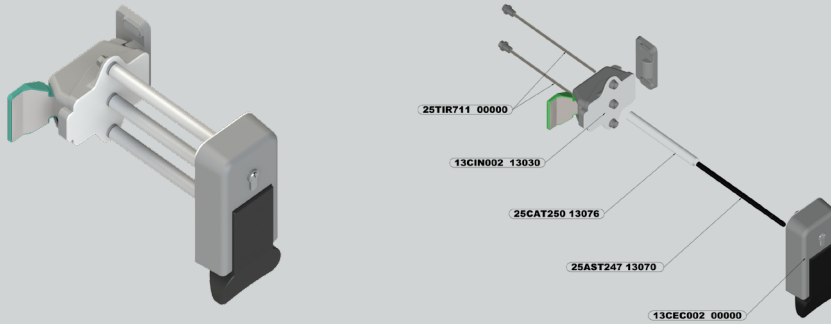
LOWER GASKET FOR MECHANICAL FIXING L=4500



3. Handles and Locks

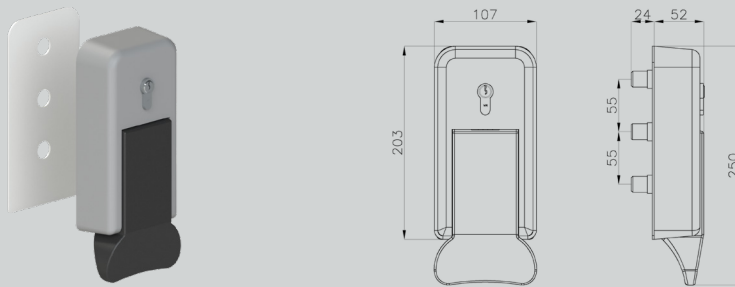
13KIT512 00000

HANDLE SET INT/EXT CSI GR RAL7004 W/LOCK DOOR THK=UN



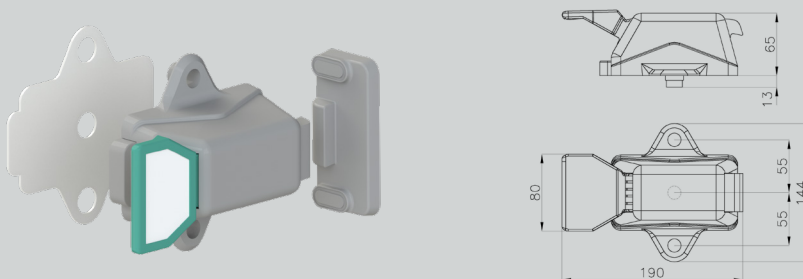
13CEC002 13020

EXT HANDLE CSI GR RAL7004/LEV. BK W/LOCK W/FOAM TAPE



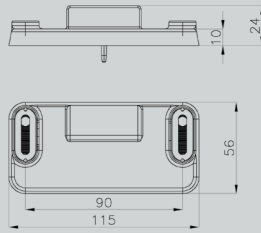
13CIN002 13030

INT HNDL CSI GR RAL7004/LEV.GRN W/FOAM TAP/ADJUST.STRIKE



13CSC700 15070

ADJUST.STRIKE FOR INT HANDLE CSI GR RAL7004 W/PLUGS



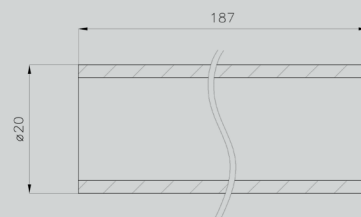
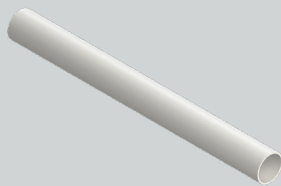
25AST203 CS246

DRIVE STAFF FOR HANDLE CSI L=246 FOR DOOR THK=203



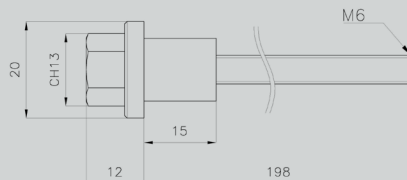
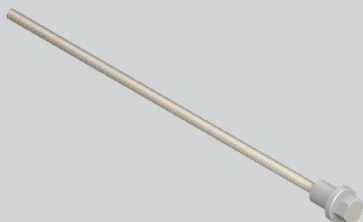
25CAT250 13076

SLEEVE FOR HANDLE CSI L=187 FOR DOOR THK=UNIVERSAL



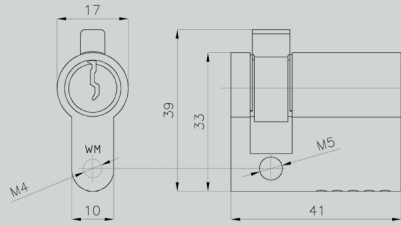
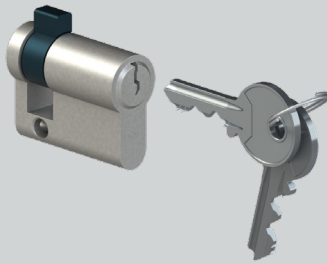
25TIR711 00000

TIE ROD FOR HNDL CSI L=198 GREY RAL7004 FOR DOOR THK=UNI



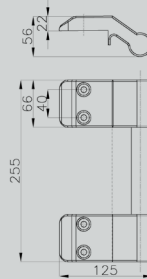
13CSC501 00000

NICKEL-PLATED CYLINDER FOR HANDLE CSI



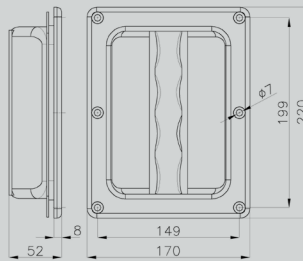
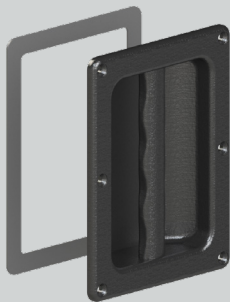
13SEF011 13049

REV. EXT FIXED HANDLE W/STAINL.ST. TUBE W/PLUGS



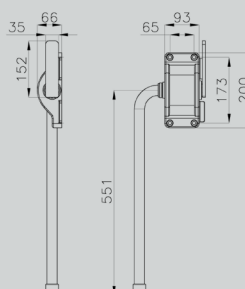
13SIF301 13045

INTERNAL PLASTIC DEEP-SET HANDLE



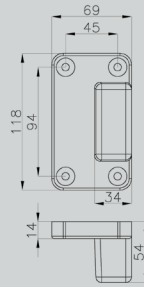
13SEF031 13056

REV. EXT LEVER HANDLE W/PLUGS FOR SLIDING DOOR THK=121-151



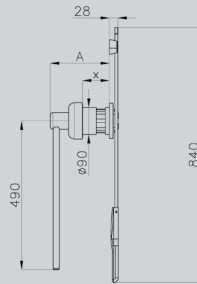
13SAE201 15057

PLASTIC STRIKER FOR EXTERNAL LEVER HANDLE COMPLETE W/PLUGS



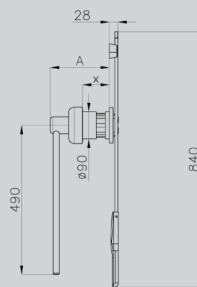
13KIS490 00000

HANDLE SET INT/EXT LEVER FOR SLIDING D. THK=60-92 RH S/P



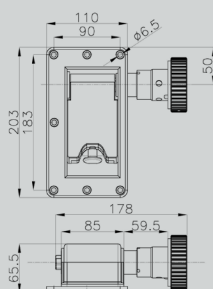
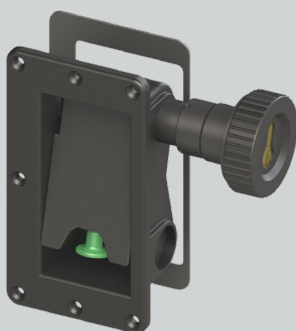
13KIS420 00000

HANDLE SET INT/EXT LEVER FOR SLIDING D. THK=93-121 RH S/P



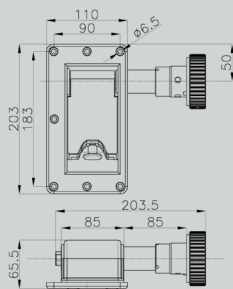
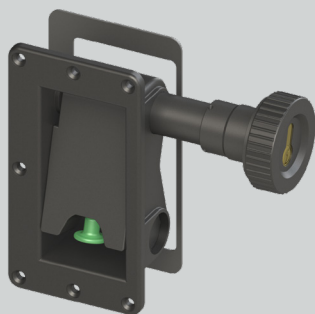
13NQF003 13101

REVERSIBLE LOCK "ART. 94" FOR SLIDING DOOR L=178



13NQF002 13100

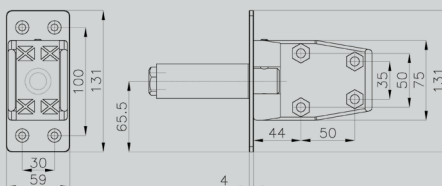
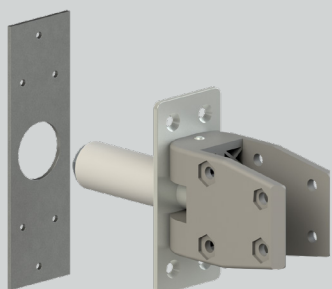
REVERSIBLE LOCK "ART. 94" FOR SLIDING DOOR L=204



4. Hinges

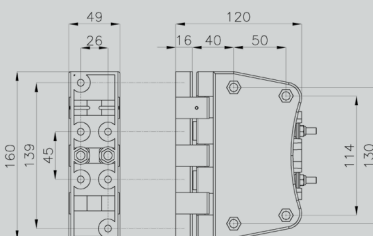
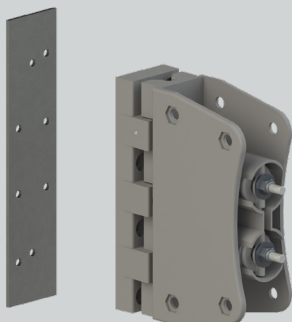
14VVF002 00000

TO&FRO HINGE WITH IN-FRAME SPRING RAL7004 W/O BLOCK AT 90°



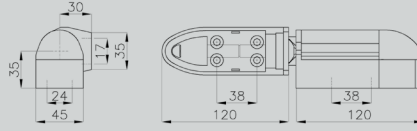
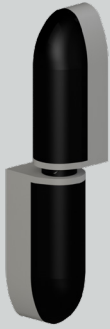
14VVF003 14014

TO&FRO HINGE IN-BLADE SPRINGS RAL7004 PLAST. ROD BLOCK AT 90°



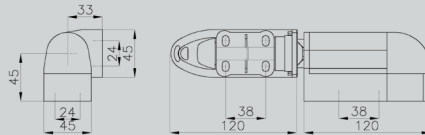
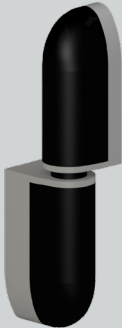
14PLG100 14032

REV. HINGE W/ ADJUST. CAM H=35 GREY RAL7004 BLACK LIDS



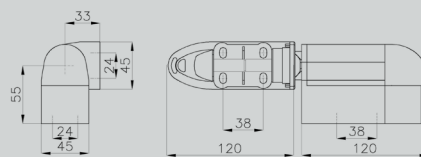
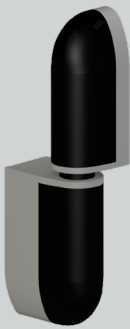
14PLG200 14033

REV. HINGE W/ ADJUST. CAM H=45 GREY RAL7004 BLACK LIDS



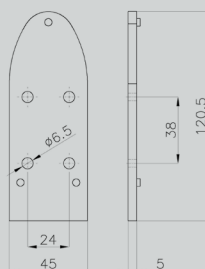
14PLG201 14034

REV. HINGE W/ ADJUST. CAM H=55 GREY RAL7004 BLACK LIDS



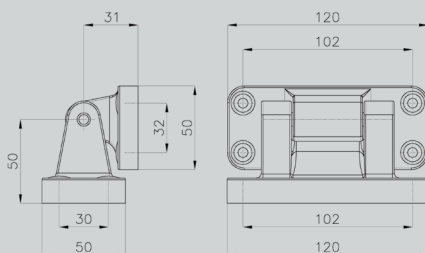
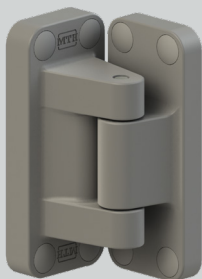
06CER001 00000

SPACER FOR ADJUST. HINGE H=5 GREY RAL7004



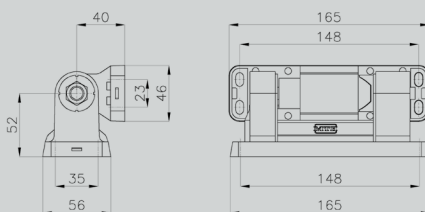
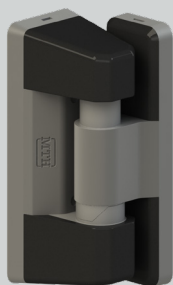
14PLP141 00000

REV. FLAT HINGE H=50 GREY RAL7004 W/ PLUG DOOR THK.=68-92



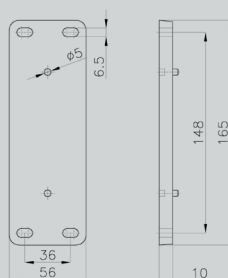
14PLG830 00000

3D REV. HINGE W/ ADJUST. CAM GREY RAL7004 BLACK LIDS



14PLG815 00000

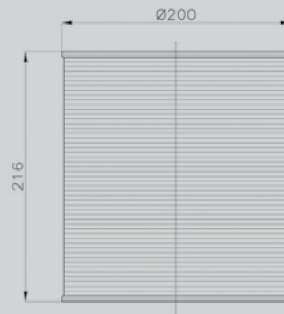
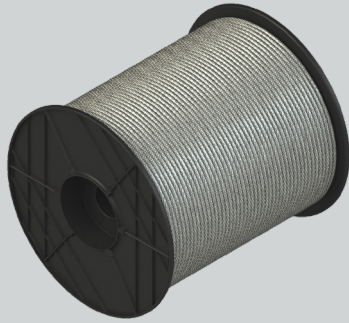
SPACER FOR 3D ADJUSTABLE HINGE H=10 GREY RAL7004



5. Heating Cable

18PCO005 00000

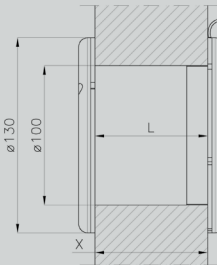
HEAT.CAB.COIL CONST. P 30W/230V D4 L=250 + 40 KIT



6. Compensating Valves

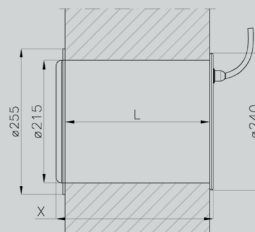
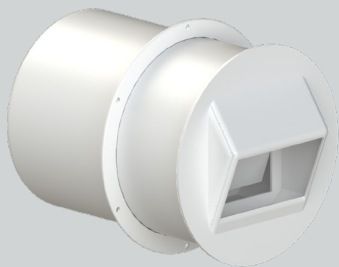
19VAL001 15015

PRESS. COMPENS. VALVE Ø =100 POS./LOW TEMP. HORIZ./VERT. ASS.



19VAL013

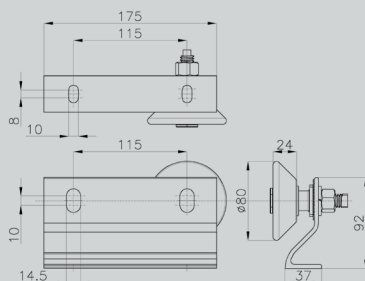
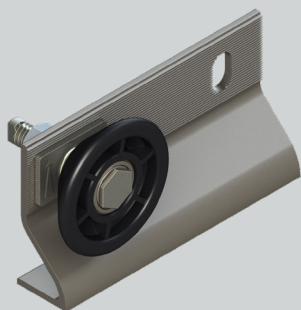
PRESS. COMPENS. VALVE Ø =215 NEGATIVE TEMPERATURE



7. Sliding System Components

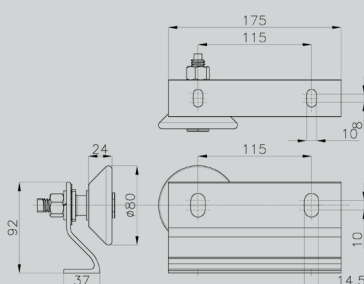
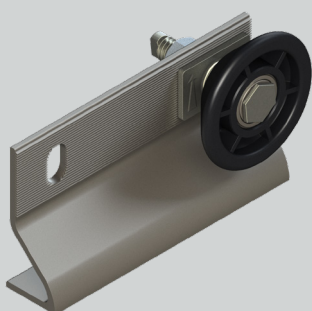
24CAS005 14069

FULL RH ALUMINIUM PULLEY MODEL 240



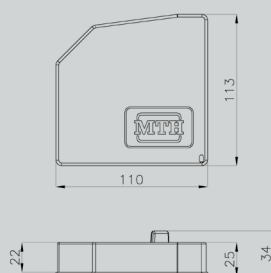
24CAS004 14068

FULL LH ALUMINIUM PULLEY MODEL 240



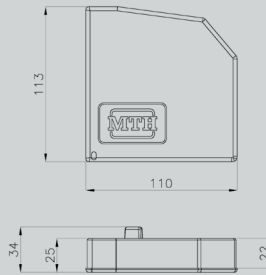
24ACT102 15041

RH TRACK COVER HEAD FOR TRACK MOD. 240



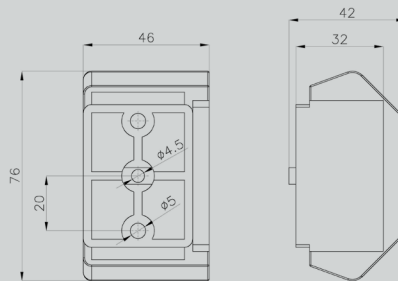
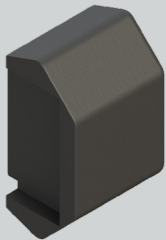
24ACT103 15042

LH TRACK COVER HEAD FOR TRACK MOD. 240



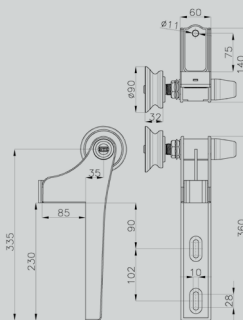
24ACP020 00000

REV. LIMIT STOP FOR TRACK MOD. 240



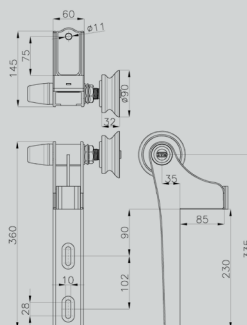
24CPT600 00000

UNI RH PLASTIC PULLEY WITH PA WHEEL & GALV. PIN L=155



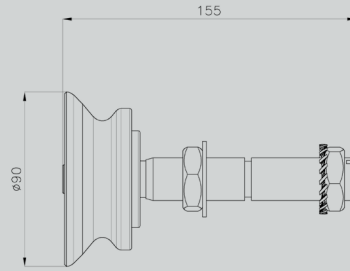
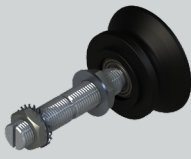
24CPT601 00000

UNI LH PLASTIC PULLEY WITH PA WHEEL & GALV. PIN L=155



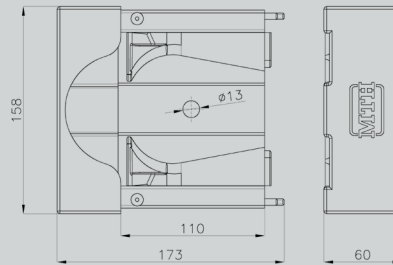
24CCR500 00000

PA WHEEL W/BEARING, GALV. PIN L=155, NUT & WASH. UNI PULLEY



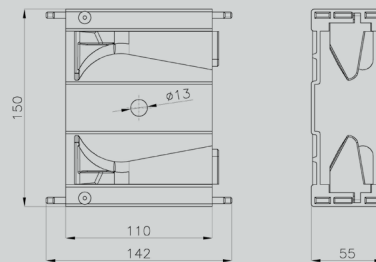
24BIN001 00000

CLOSING BLOCK WITH BENDS AND PLUG FOR "MIRROR" MOD. TRACK



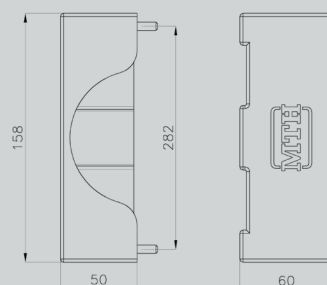
24BIN002 00000

CENTRAL BLOCK WITH BENDS AND PLUG FOR "MIRROR" MOD. TRACK



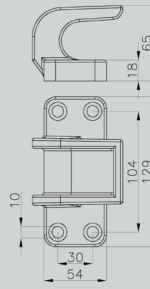
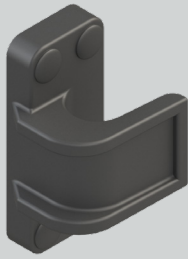
24ACT602 00000

OPENING SIDE END PLUG FOR "MIRROR" MOD. TRACK



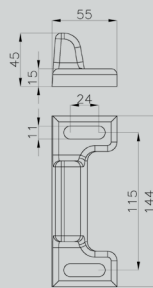
24ACN001 15058

LOWER CLOSING HOOK COMPLETE W/PLUGS FOR SLIDING DOOR



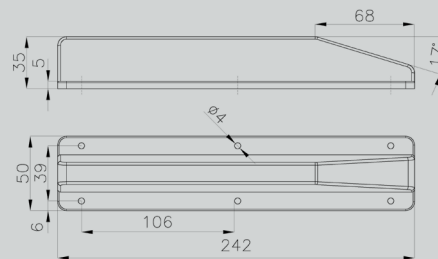
24ACR001 15059

LOWER CLOSING HOOK STRIKER FOR SLIDING DOOR



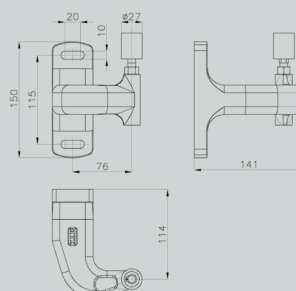
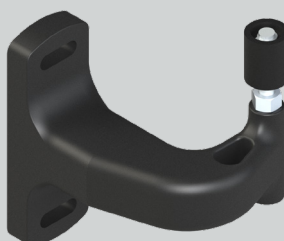
24ACU001 15052

NYLON WEDGE H=35 FOR SLIDING DOOR



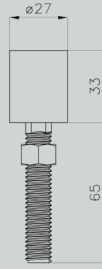
24RPV225 00000

REV. PLASTIC REAR REGISTER 2.0, W/PIN & ADJUSTABLE ROLLER



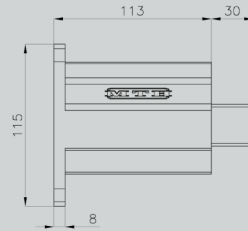
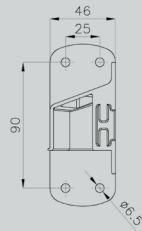
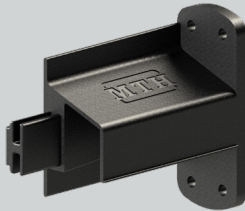
24RCR003 00000

ROLLER WITH THREADED PIN FOR REAR REGISTER



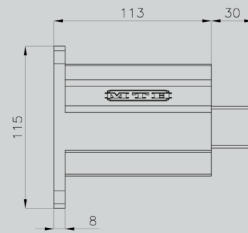
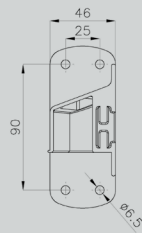
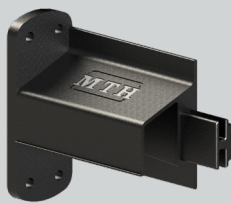
24RCS911 00000

REAR GUIDE FIXING BRACKET FOR LH OPENING



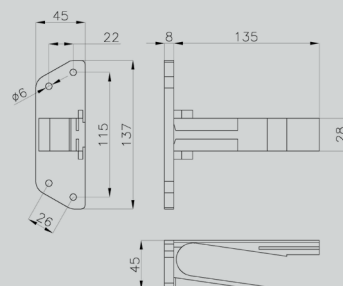
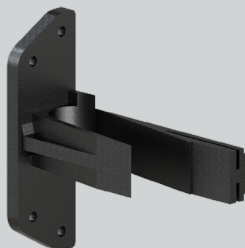
24RCS910 00000

REAR GUIDE FIXING BRACKET FOR RH OPENING



24RCS001 15071

REV. REAR GUIDE FIXING BRACKET



24RCT100 15072
REV. REAR GUIDE PLUG

